

Information about the Integrated Japanese Language Program

■Application method

All students who wish to take Japanese language courses must apply online through the IJLP Course Enrollment System.

If you are taking the IJLP for the first time, you will need to take the orientation and the placement test given at the start of the semester. For details about the orientation and the placement test, see the ISC website or the Enrollment System before the semester starts.

Kanazawa University International Student Center Website

<http://isc.ge.kanazawa-u.ac.jp/>

Home > Integrated Japanese Language Program

INTEGRATED JAPANESE LANGUAGE PROGRAM
COURSE ENROLMENT SYSTEM

Enrollment Periods

Spring semester (April - September): March and April

Autumn semester (October - March): September and October

■Inquiries

If you would like more information, please contact the Student Affairs Division of the Global Affairs Section, Kanazawa University.

E-mail: ryukou@adm.kanazawa-u.ac.jp

TEL: +81-(0)76-264-5237

Student Affairs Division, Global Affairs Section,
Kanazawa University
(Fourth floor, Administrative Building)

KANAZAWA UNIVERSITY INTERNATIONAL STUDENT CENTER

International Student Center
Kanazawa University

IJLP

INTEGRATED JAPANESE
LANGUAGE PROGRAM



Outline of the Integrated Japanese Language Program

Who can take these classes?

The Integrated Japanese Language Program is a Japanese language program for all international students studying at Kanazawa University.

What will you be able to do?

The aim of the IJLP is to improve students' Japanese language ability and help them fit into the university and life in Japan.

The ultimate goals of course are the following:

- Students can gain enough language ability to be able to understand lectures and seminars and be able to carry out their study and research in Japanese.
- Students can gain enough knowledge to be able to understand Japanese culture and society by learning the language.

What kinds of classes are there?

The program consists of three types of classes: regular classes, kanji classes and skill-specific classes. Students can select the appropriate classes to fit their needs in each area.

Comprehensive classes:

Seven different levels, from zero (never studied Japanese before) to advanced. Learn Japanese comprehensively in a class that matches the student's own level.

Kanji classes:

Divided into difficulty levels, students learn how to read and write kanji, and how to use kanji vocabulary.

Skill-specific classes:

A range of classes for the four different skills of "speaking," "listening," "writing," and "reading." Students can choose the class that best suits their learning goals.

Where can you study?

The courses are offered at Kakuma campus (General Education Hall and Natural Science and Technology Main Hall) and Takaramachi campus.

Place		Kakuma campus						Takaramachi campus	
Classes/ Course		Comprehensive classes	Kanji & Vocabulary classes 1/week	Skill-specific classes 1/week				Business Japanese Course	Japanese for Faculty of Medicine
				Reading	Writing	Listening	Listening & Speaking		
Elementary <small>Can understand and use familiar everyday expressions</small>	A-level	AS(Survival) 2/w A1, A2(Regular) 4/w AA(Intensive) 10/w	Kanji & Vocabulary 1						Faculty of Medicine (Introductory)
	B-level	B 4/w	Kanji & Vocabulary 2						Faculty of Medicine (Elementary)
	C1-level	C1 3/w	Kanji & Vocabulary 3	Reading 1 (Introductory)	Writing				Faculty of Medicine (Intermediate)
Intermediate <small>Can understand and communicate in general situations</small>	C2-level	C2 3/w	Kanji & Vocabulary 4			Intermediate Listening			
	D-level	D 3/w	Kanji & Vocabulary 5	Reading 2 (Intermediate)	Academic Writing 1				
Advanced <small>Can understand and communicate in academic settings</small>	E-level	E 3/w	Kanji & Vocabulary 6	Reading 3* (Advanced)		Academic Listening*	Oral Presentation*	Business Japanese	
	F-level	F 3/w	Kanji & Vocabulary 7	Japanese for Academic Purposes*	Academic Writing 2		Discussion (Joint class)** Japanese Affairs**		

* These classes are also held as "Japanese B" course of General Education. ** These classes are also held as "Japan Affairs" course of General Education.

The IJLP responds to your needs!

Here are examples of recommended selections of classes;

I do not know any Japanese at all. I need to study from the beginning.



Japanese A

Kanji & vocab.1



I am busy with my research and I don't have enough time to study Japanese, but I want to be able to manage daily conversation.

Japanese AS

I have studied up to intermediate level and want to continue my Japanese study, but I am busy with my majors.



Academic Writing 1

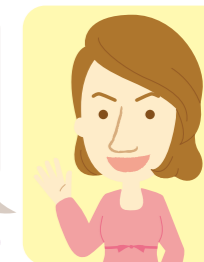
Kanji & vocabulary 6



I am in the Medical School at Takaramachi, and so getting to Kakuma campus is difficult.

Japanese for Faculty of Medicine

I want to work for a Japanese company after I graduate. What should I take to make this easier?



Business Japanese